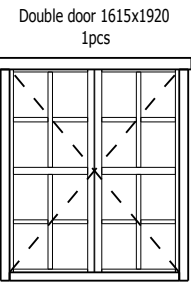
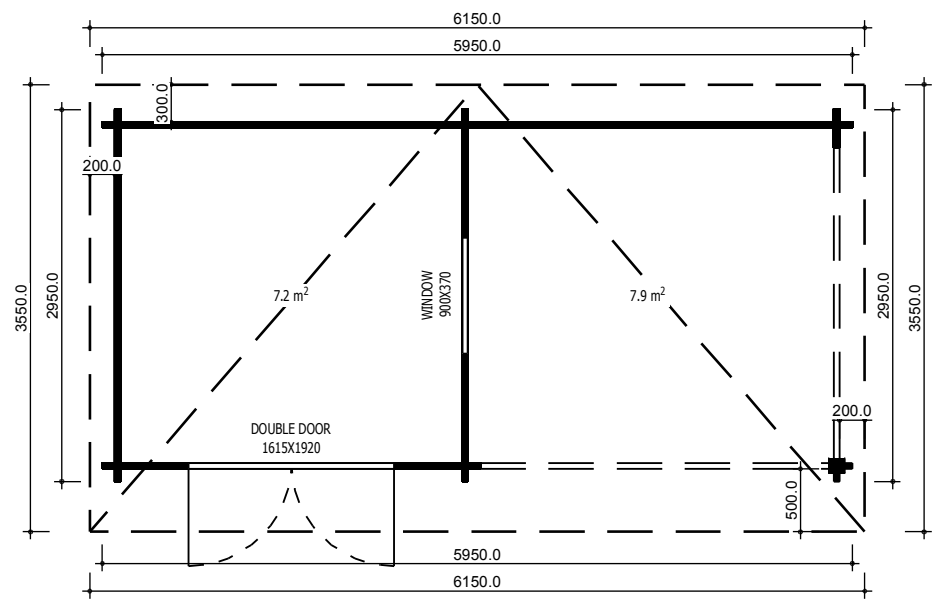
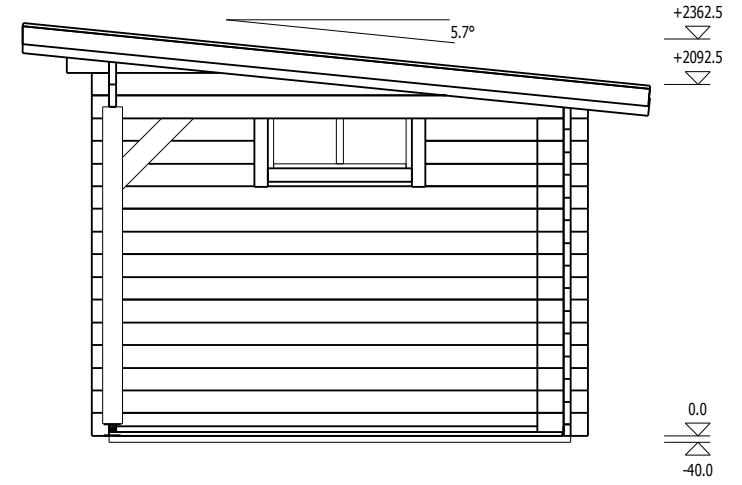
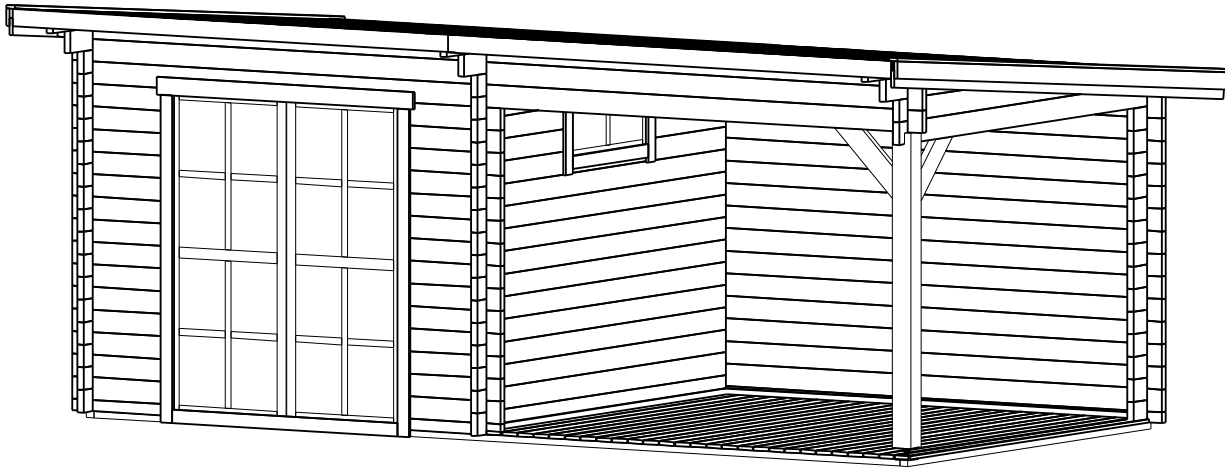


TRJ20NEWPORT



Name	NEWPORT
Product code	TRJ20NEWPORT
External dimensions	5.95 x 2.95 m
Base required	5.75 x 2.75 m
Wall thickness	44 mm
Available wall thickness	34, 44, 66 mm
Eaves height	2093 mm
Ridge height	2363 mm
Roof angle	5.7°
Internal size	7.2 m ²
Deck	7.9 m ²